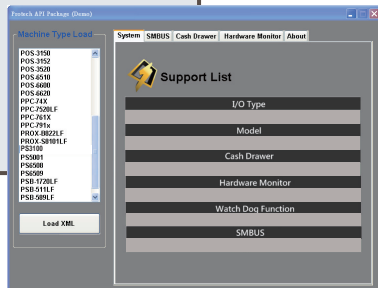


API Package

Quick Reference Guide



Ver. Q1

All Right Reserved Copyright 2012

Step 1

Select the Initial.xml corresponding to your machine type.

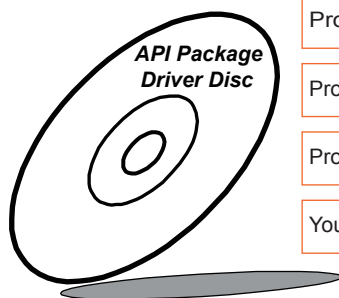
- ① Find the Initial.xml under the folder named after your machine type in the directory ProxAPI standard\XML Files.
- ② Put the Initial.xml and *.dll files in the same directory path as the *.exe you created for your project.

752X	POS-3520
811LF	POS-6510
822LF	POS-6620
6505	PPC74X(7400,7402,7405,7407)
6508	PPC752x
6509	PPC791x
8070	PPC-761X
8590LF	PROX-F701LF
8831	PS3100
8852	PS3150
8853	PS5001
8930	PSB511
9611LF	PSB589
BPC-8072	PSB-1720LF
C587	
E581	
ISA588	
L586	
L589	
LS-588	
PD-9040	
PMB472	
PMB562	
PMB587	
PMB-732LF	
POS-3152	

Step 2

Select *.dll files

Select *.dll files of the functions you desire in the directory ProxAPI standard*. All the necessary items for developing a program are listed below.



ProxAPI standard\multilangXML.dll

ProxAPI standard\XML Files\Initial.xml

ProxAPI standard*.dll of various functions

Your project Application (*.EXE)

Put the four items to the same folder, e.g. the directory of your project application*.EXE.

Then you can start to develop a program for your project.

Make sure the necessary items are all located in the same directory.

Take Cash Drawer developing for example. The items in a folder along with your application *.EXE will be as follows.

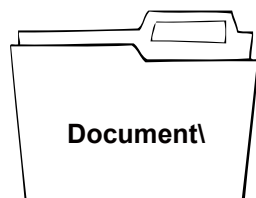
- multilangXML.dll
- Initial.xml
- Cash Drawer.dll
- Application (*.EXE)

Dynamic linking library (DLL) is essential to develop a program. For details, please refer to *Chapter 4 - Program Developing* of the *User Manual*.

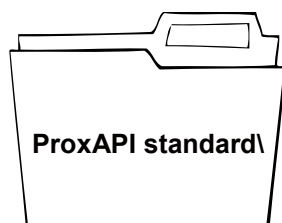
API Package

Speed up project release & reduce workload for you

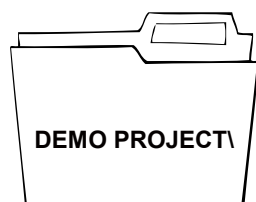
Package Content



Windows 32 bit + .NET Framework 2.0 or above	
Contents / File Name	Description
Protech API Package User Guide A01-0000-000-02-xxxxxx_en.pdf	User Manual in English
Protech API Package User Guide A01-0000-000-02-xxxxxx_ch.pdf	User Manual in Chinese
IO Description.pdf	---
UPS Standard SBS Commands.pdf	---



Function DLL		
Function	File Name	Description
Cash Drawer	Cash Drawer.dll	Driver to control Cash Drawer
Digital	Digital.dll	Driver to control Digital
GPIO	GPIO.dll	Driver to control GPIO
	WinIo.dll	
	WinIo.lib	
	WinIo.sys	
	WINIO.VXD	
SMBUS	WinIo.dll	Driver to use SMBUSI
	WinIo.lib	
	WinIo.sys	
	WINIO.VXD	
	SMBUS.dll	
WDT	Watchdog.dll	Driver to control WDT
i-Button	IButtonAPI.dll	Driver to get i-Button
	IBFS32.dll	
Hardware Monitor	Hardware Monitor.dll	Driver to read the hardware data
Battery	SBS_Battery.dll	Driver to read and control the battery data
	phymem.sys	
	pmdll.dll	
multilangXML.dll		Driver to open XML files
Initial.xml		XML file to initiate the API package
ProxAP.exe		API program executable file
XML Files\Model Name*\Initial.xml		XML file for each model
Version.ini		Version information



Sample Program	
Contents / File Name	Description
Cash Drawer Sample Code	C# VB6 VB.net Source Code
DemoAPIC#(B811LF)	GPIO Source Code for 811LF
DemoAPIC#(752X)	Digital Source Code for 752X
6508 Watch Dog(MFC)	Watch Dog Source Code for 6508